

## Product Instructions

# Viega Motoric Actuator for 1½" to 2" Valves



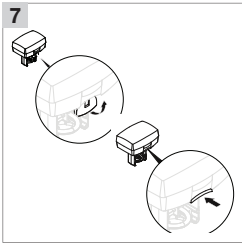
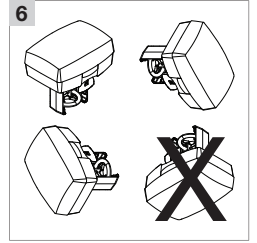
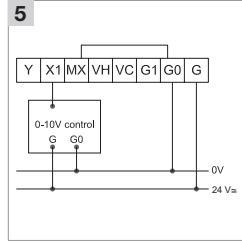
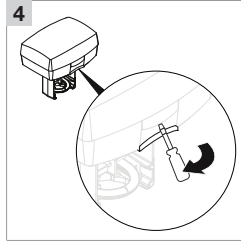
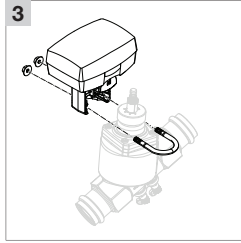
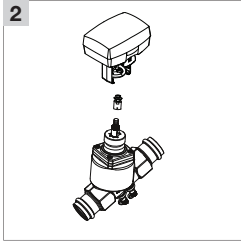
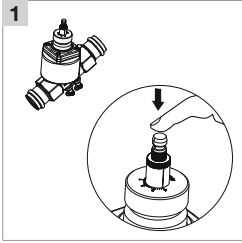
Model 2877.11

**viega**

**> Viega LLC**  
585 Interlocken Blvd.  
Broomfield, CO 80021

Phone (800) 976-9819  
www.viega.us

PI-MP-PP 531246 0524 Motoric Actuator 1½ to 2



- If adjustments are needed, pop off top cover of actuator using small tool or by hand.
- Ensure actuator is set up for required input signal. For 0-10 V control with 3-wire connection, the internal wiring is connected between MX and GO. Once complete, put top back on the actuator.

Block	Function	Description
G	24 V AC	Supply voltage
GO	24 V AC return	
X1	Input	Control signals (VH, VC, short-circuited to GO)
MX	Input, neutral	
VH	Increase	Floating
VC	Decrease	
G1	16±0.3 VDC, 25 mA	Short circuit-safe supply
Y	0-100% (2-10 V)	Feedback signal

**CAUTION!**  
**DO NOT** connect power before the actuator is mounted on the valve.

- Actuator can be oriented in any direction except upside-down.
- For manual operation, lower red handle and rotate as needed. For standard operation, ensure manual override is folded up into the locked position.

**i** Calibration is completed automatically. It takes roughly 2 to 3 minutes.

EN

## Viega Motoric Actuator for 1½" to 2" Valves

For use with Viega ProPress Balancing and Control Valve Models 2981.71 and 2987.72 and Viega MegaPress Balancing and Control Valve Models 4881.71 and 4887.72

**!** Viega products are designed to be installed by licensed and trained plumbing and mechanical professionals who are familiar with Viega products and their installation. **Installation by non-professionals may void Viega LLC's warranty.**

**DANGER!**  
**Read and understand all instructions for installing Viega ProPress and MegaPress fittings.** Failure to follow all instructions may result in extensive property damage, serious injury, or death.

- Ensure the stem of the valve is in the fully closed position.
- Align the actuator with the corresponding position on the valve. Lower linkage location should go around the valve, and upper linkage should house the actuator pin.
- Slide U channel fastener around lower linkage and tighten nuts.