

Product Instructions

Viega ProPress® Bronze 3-Piece Ball Valve ½" to 2"



Model 2972.1ZL

viega

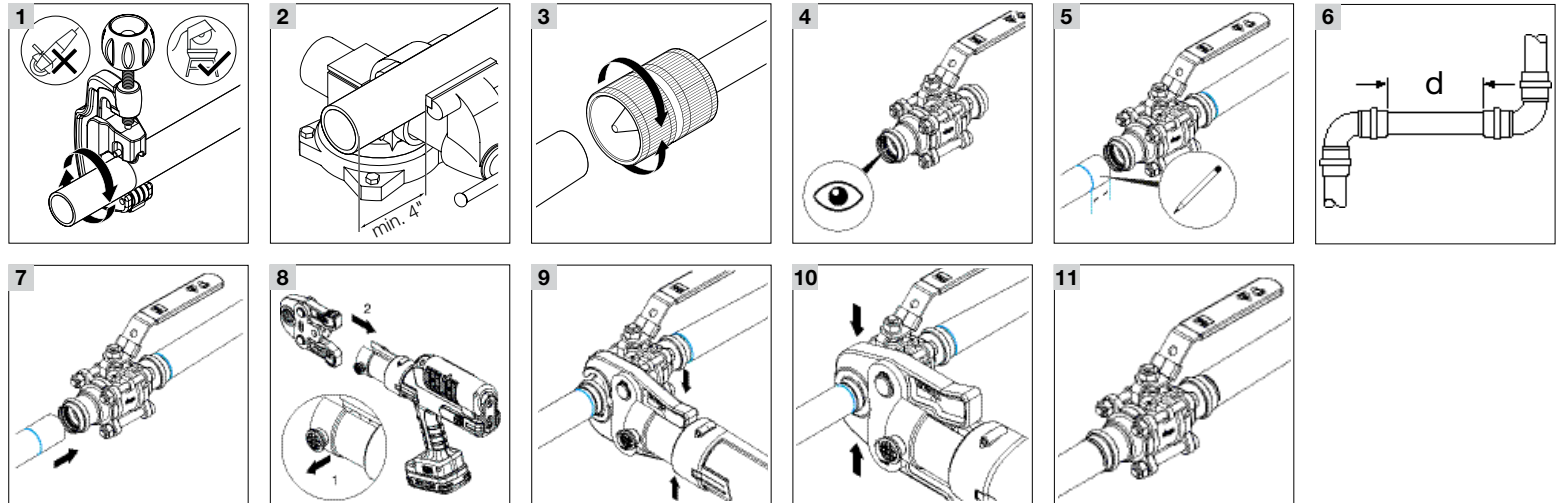
> Viega LLC
585 Interlocken Blvd.
Broomfield, CO 80021

Phone (800) 976-9819
www.viega.us

EN Product Instructions Viega ProPress Bronze 3-Piece Ball Valve ½" to 2"

This document is subject to updates. For the most current Viega technical literature, please visit www.viega.us.

PI-PP 531215 0225 ProPress Bronze 3-Piece Ball Valve (EN)



EN

Viega ProPress Bronze 3-Piece Ball Valve ½" to 2"

For Hard Copper Tubing in ½" to 2" and Soft
Copper Tubing in ½" to 1¼"

! Viega products are designed to be installed by licensed and trained plumbing and mechanical professionals who are familiar with Viega products and their installation. **Installation by non-professionals may void Viega LLC's warranty.**

! DANGER!
Read and understand all instructions for installing Viega ProPress fittings. Failure to follow all instructions may result in extensive property damage, serious injury, or death.

! Only ball valves marked with NSF-61 and NSF 372 are allowed for use in potable water systems.

- 1 Cut copper tubing square using displacement-type cutter or fine-toothed saw.
- 2 Cut tubing a minimum of 4" away from the contact area of the vise to prevent possible damage to the tubing in the press area.
- 3 Remove burr from inside and outside of tubing and prep to proper insertion depth using a preparation tool or fine grit sandpaper.

- 4 Check the sealing element for correct fit. Do not use oils or lubricants. Use only Viega ProPress sealing elements. Visually inspect and ensure the body bolts appear tight. If they seem loose, verify their torques in accordance with the table provided at the bottom of this page.
- 5 Mark proper insertion depth as indicated by the Viega ProPress Insertion Depth Chart. Improper insertion depth may result in improper seal. It is recommended that the depth marking be visible on the completed assembly.

Viega ProPress Insertion Depth Chart

Tube Size	½"	¾"	1"	1¼"	1½"	2"
Insertion Depth	¾"	⅞"	⅞"	1"	1⅞"	1⅞"

- 6 Refer to the chart below for minimum distance between fittings. To ensure a correct press, a minimum distance between press fittings must be maintained. Failure to provide this distance may result in an improper seal.

Tube Diameter (in)	d (in)	d (mm)
½"	0	0
¾"	0	0
1"	0	0
1¼"	⅞"	10
1½"	⅞"	15
2"	¾"	20

Valve Size (in)	Valve Body	Bolt & Nut Size	Bolt Torque (ft/lbs)	+/-5 (Nm)	Valve Stem Nut Size (mm)	Handle Nut (ft/lbs)	Handle Nut (Nm)
½"	M8 x 55	M8	7.5	(10)	AF 16	7.5	10
¾"	M8 x 65	M8	15	(20)	AF 18	11	15
1"	M10 x 75	M810	15	(20)	AF 21	11	15
1¼"	M10 x 90	M810	22.5	(30)	AF 22	18.5	25
1½"	M10 x 100	M810	22.5	(30)	AF 24	18.5	25
2"	M10 x 100	M810	22.5	(30)	AF 24	18.5	25

i Copper tubing must be free of surface imperfections, including metal stamped print lines, before a ProPress fitting is installed.

- 7 While turning slightly, slide valve onto tubing to the marked depth. End of tubing must contact stop.
- 8 Insert appropriate Viega ProPress jaw into the press tool and push in, holding pin until it locks in place.

! WARNING!
Keep extremities and foreign objects away from press tool during pressing operation to prevent injury or incomplete press.

- 9 Open the jaw and place at right angle to the valve. Visually check insertion depth using mark on tubing.
- 10 Hold trigger on press tool until press jaws have fully engaged the valve.
- 11 After pressing, open the jaw and remove the press tool. Repeat steps for the other end of the valve.

! Maintenance Recommendation:
Ball valves must be operated regularly, ideally every 6 months, but at least once a year. Before installing accessories, operate the valve fully opened and closed with the standard handle.